

Duo Discus T - The cardmodel

This kit is a scale model of the Duo Discus T callsign D-KPBB as it is flown in Hamburg-Boberg (www.hac-boberg.de). It consists of 5 pages for the parts. Four should be printed on 160 g/m² document paper, the one carrying the connectors has to be printed on 90gr normal printer paper. The instructions are just 3 pages of graphics plus this page.

Features of this kit:

Build it with or without gear. All outlines are faded gray. Thus they do not disturb the nice white finish. You can even try to use glossy paper for photo prints, haven't tried that before.

Tips for building :

This is not a model for beginners. The instructions are brief and you should be used to tube and gluetab style fuselages. Some parts may be omitted, e.g. the wing ribs as the wings are really thin.

Strengthen the middle section of the spar by soaking it in CA (superglue). The wing spars have triangles on their top which point towards the front of the glider. The formers of the fuselage (parts 2b to 11b) and the spars for the ruder and elevator (14a, 16c) are just doubled on the same cardstock. Page 2 provides a guide to get the dihedrals of the wing sections correct. The wheels are made of layers of cardboard, then filed round and painted black.

*Add a towing plane, e.g. the PZL Wilga by GPM.

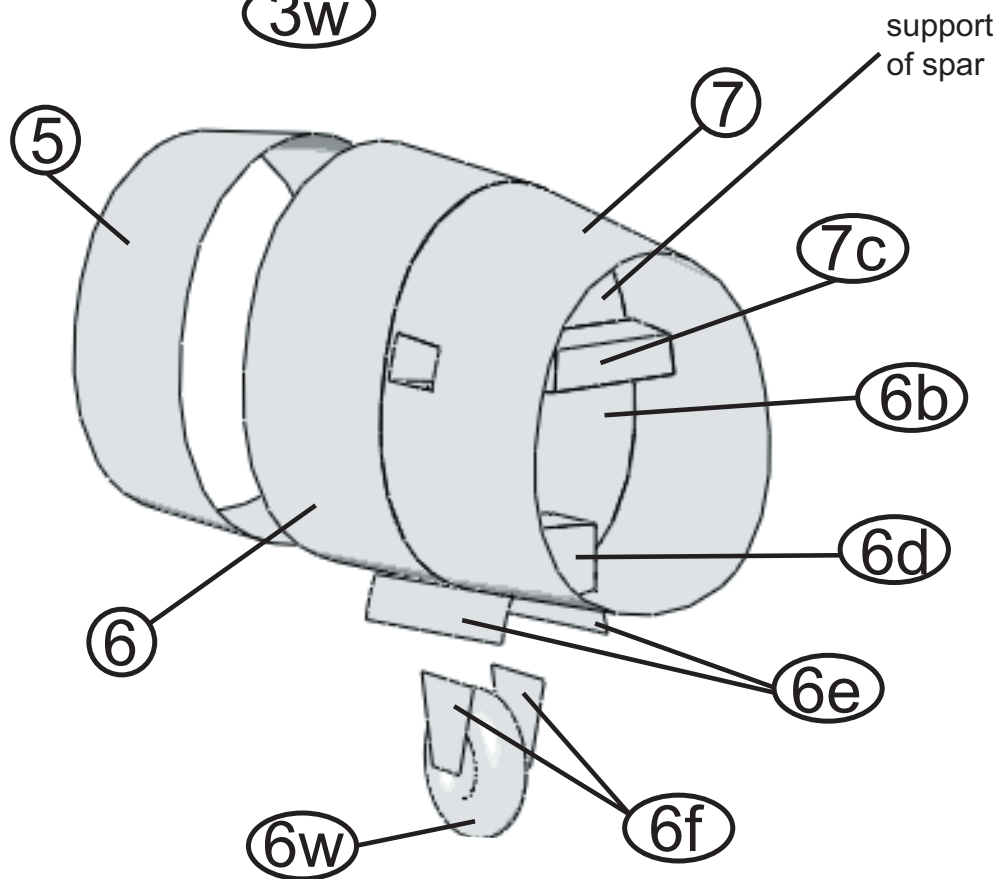
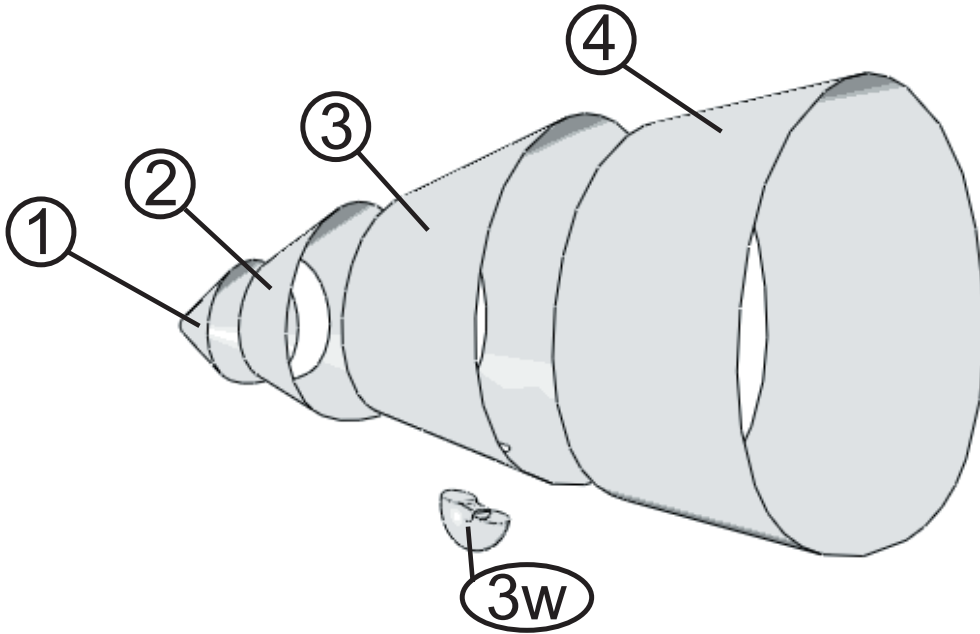
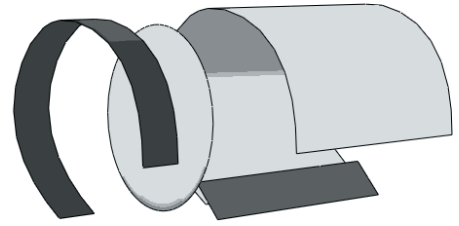
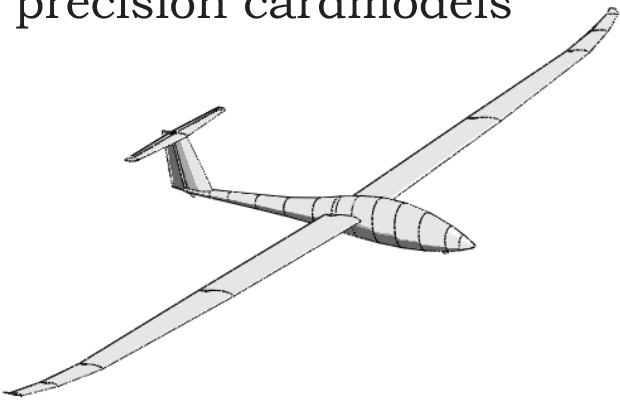
*Make lots of them and make the "Thermal mobilé".

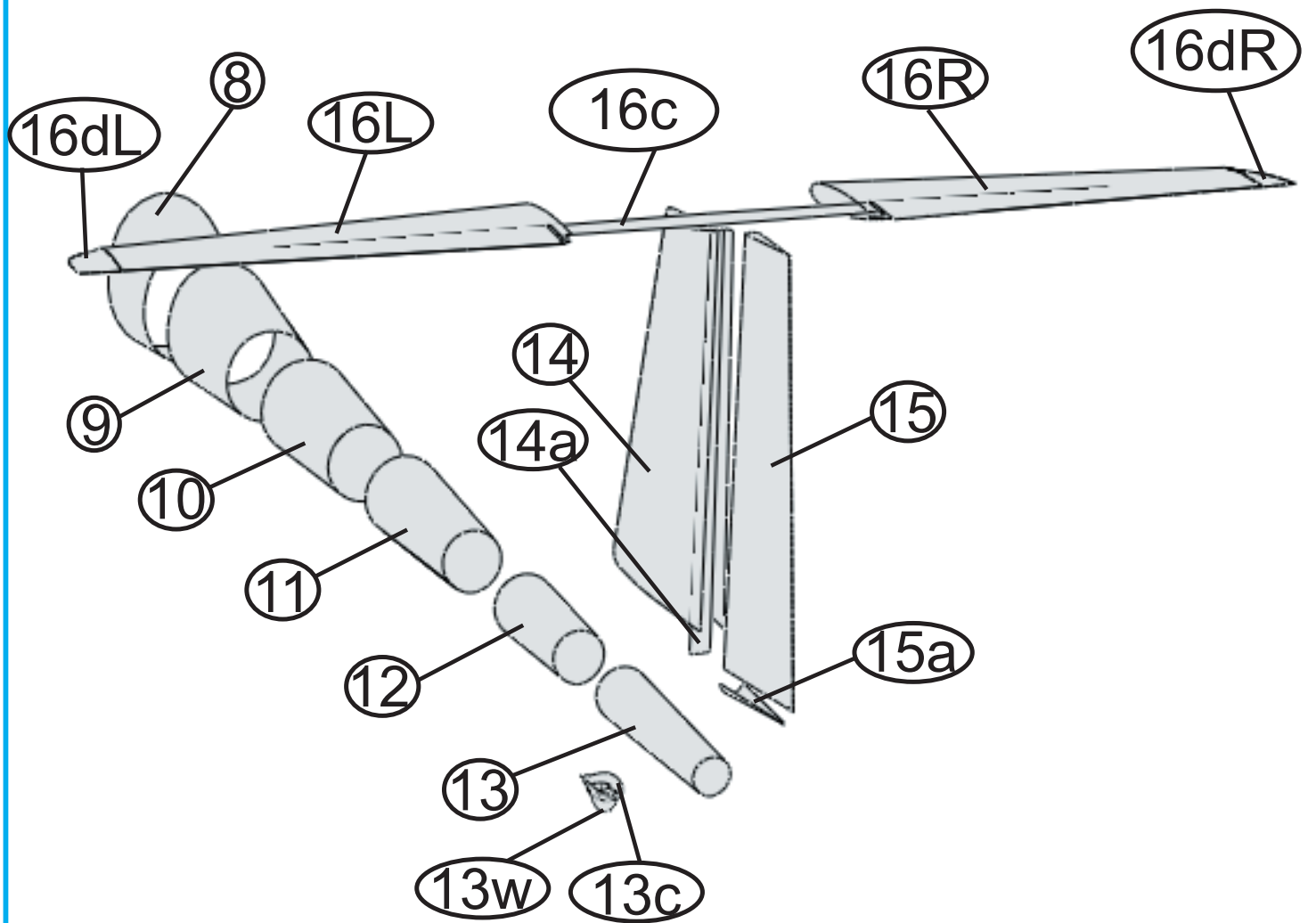
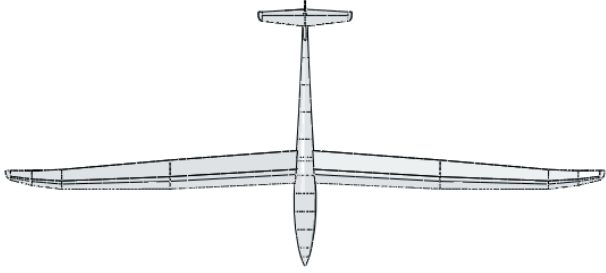
*160 gr/m² document paper available at Staples from 'Rey today'.

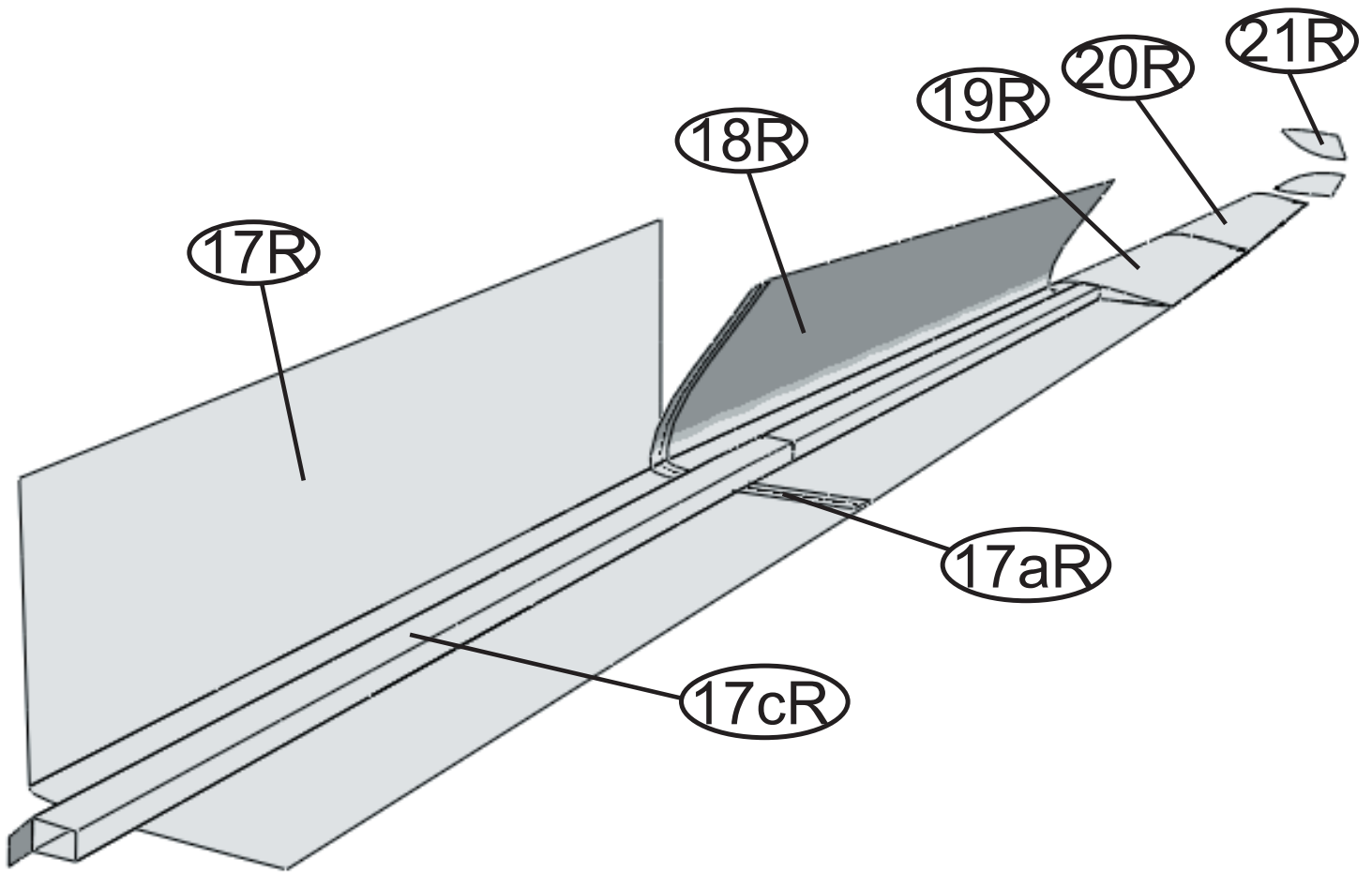
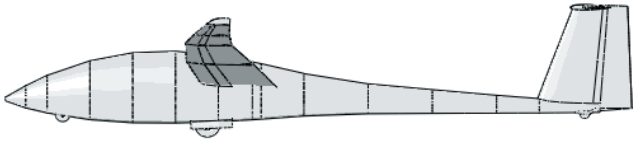
*Build it and share your experiences with me. Send email to jmueller@uni-bremen.de

Happy building!

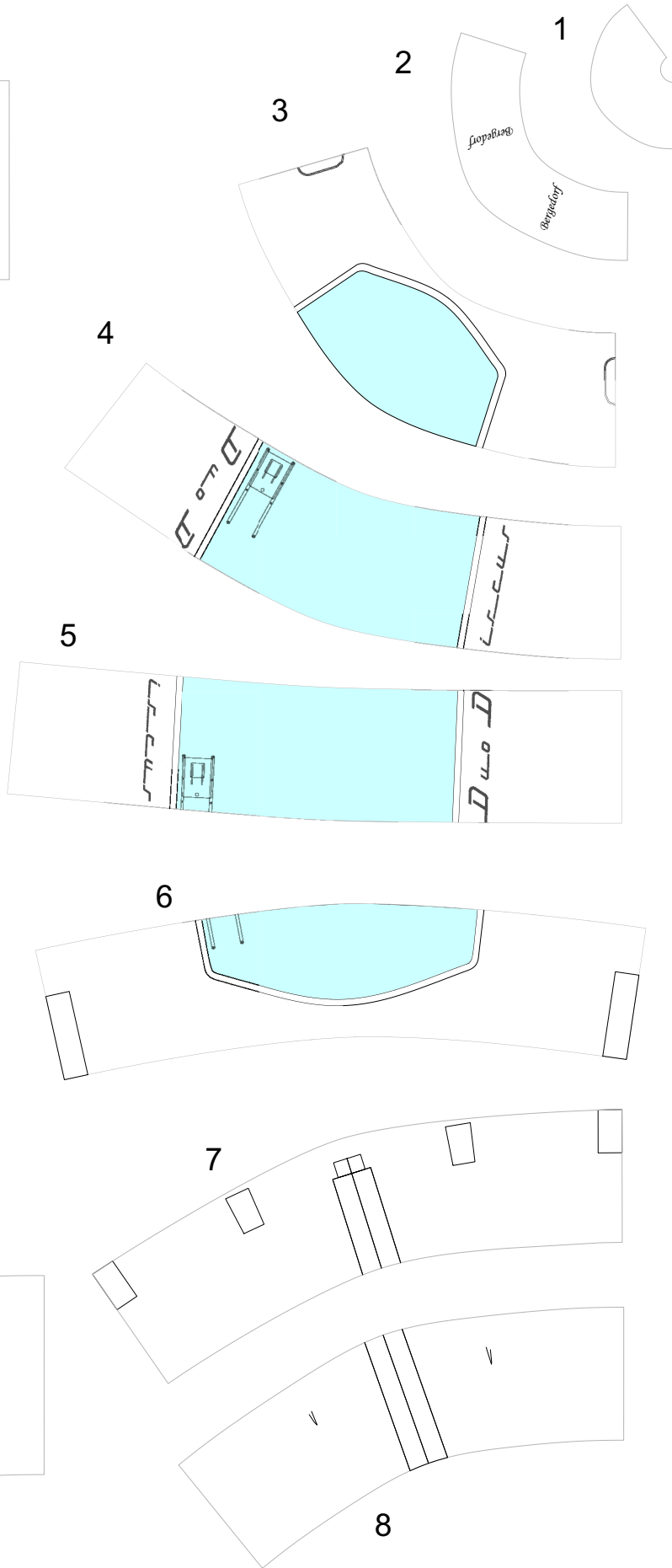
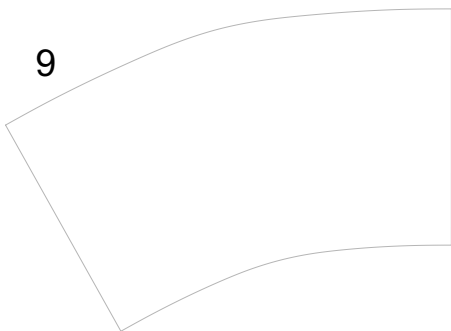
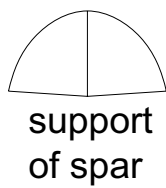
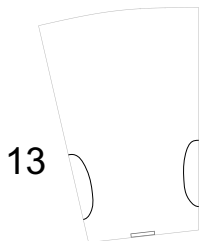
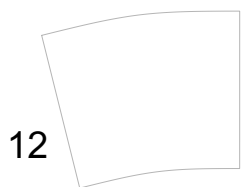
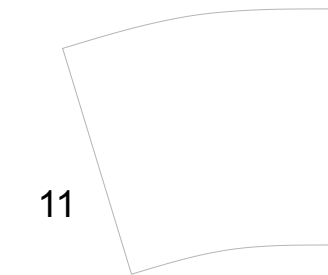
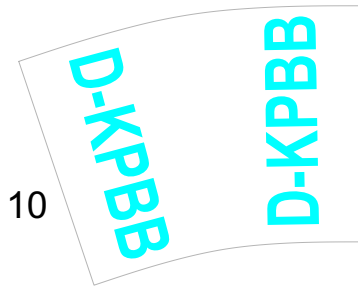
Jan Müller



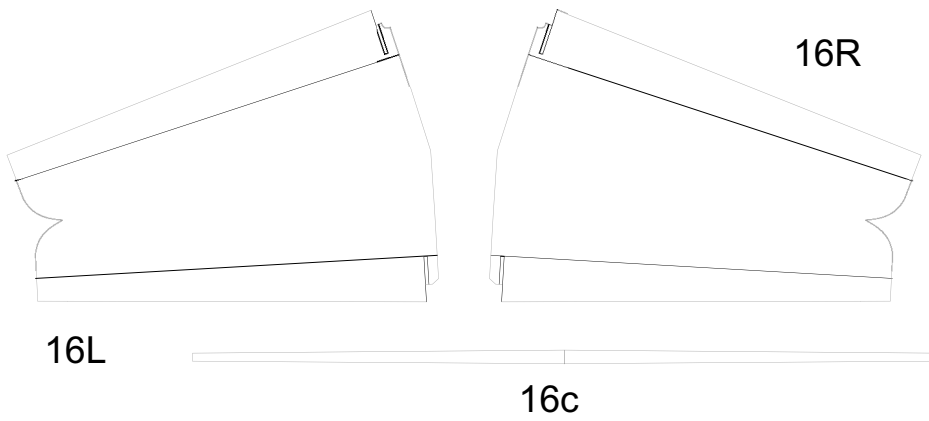
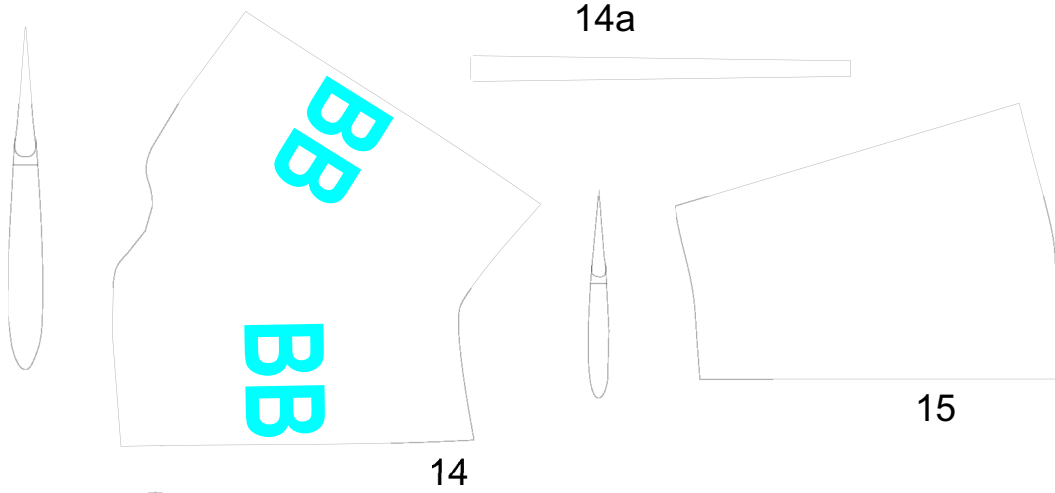




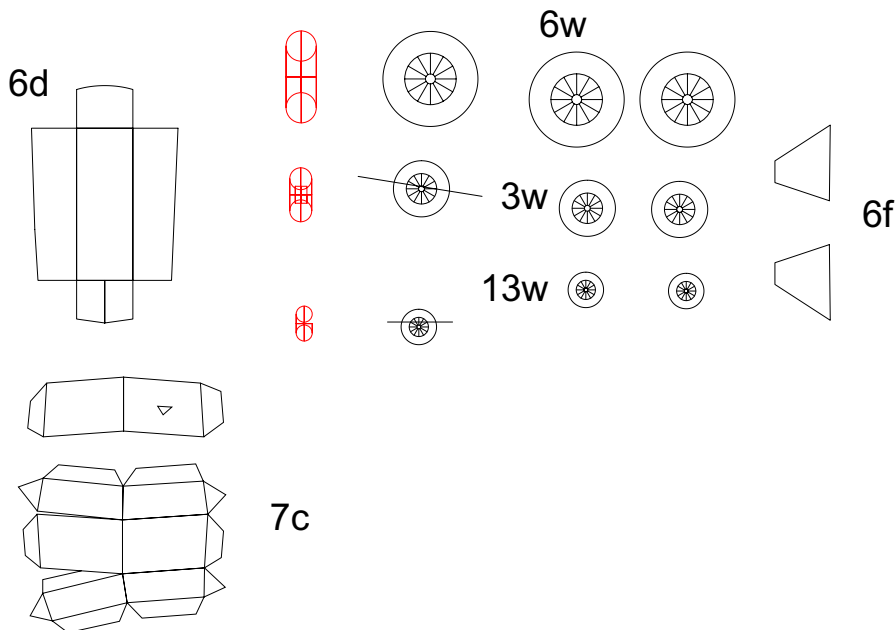
- 2b
- 3b
- 4b
- 5b front
- 5b rear
- 6b
- 7b
- 8b
- 9b
- 10b
- 11b



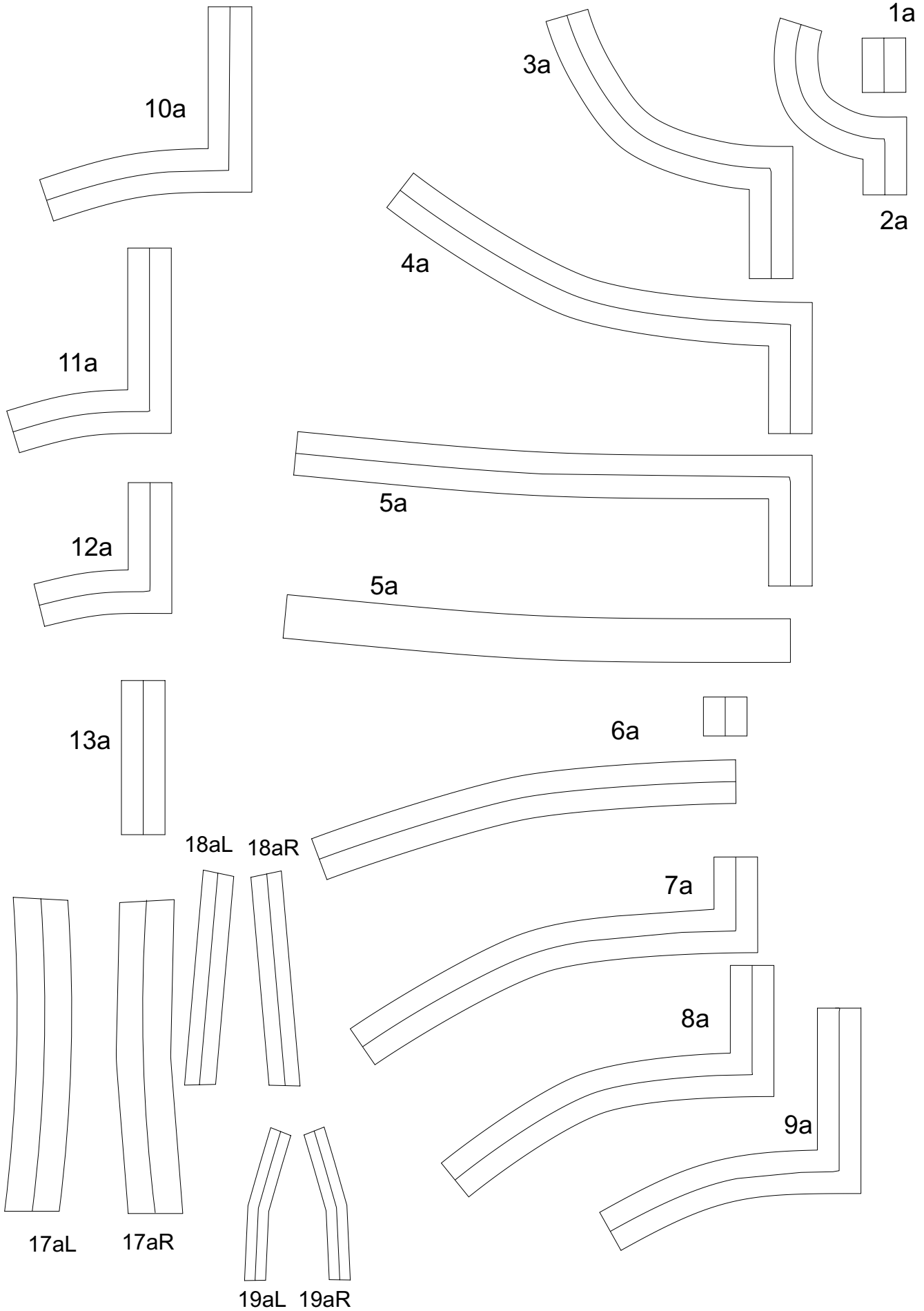
15cm



guide for
dihedral



Helling für
V-form



D-KPBB

17L

19L

18L

21L

20L

20cL

19bL

18bL

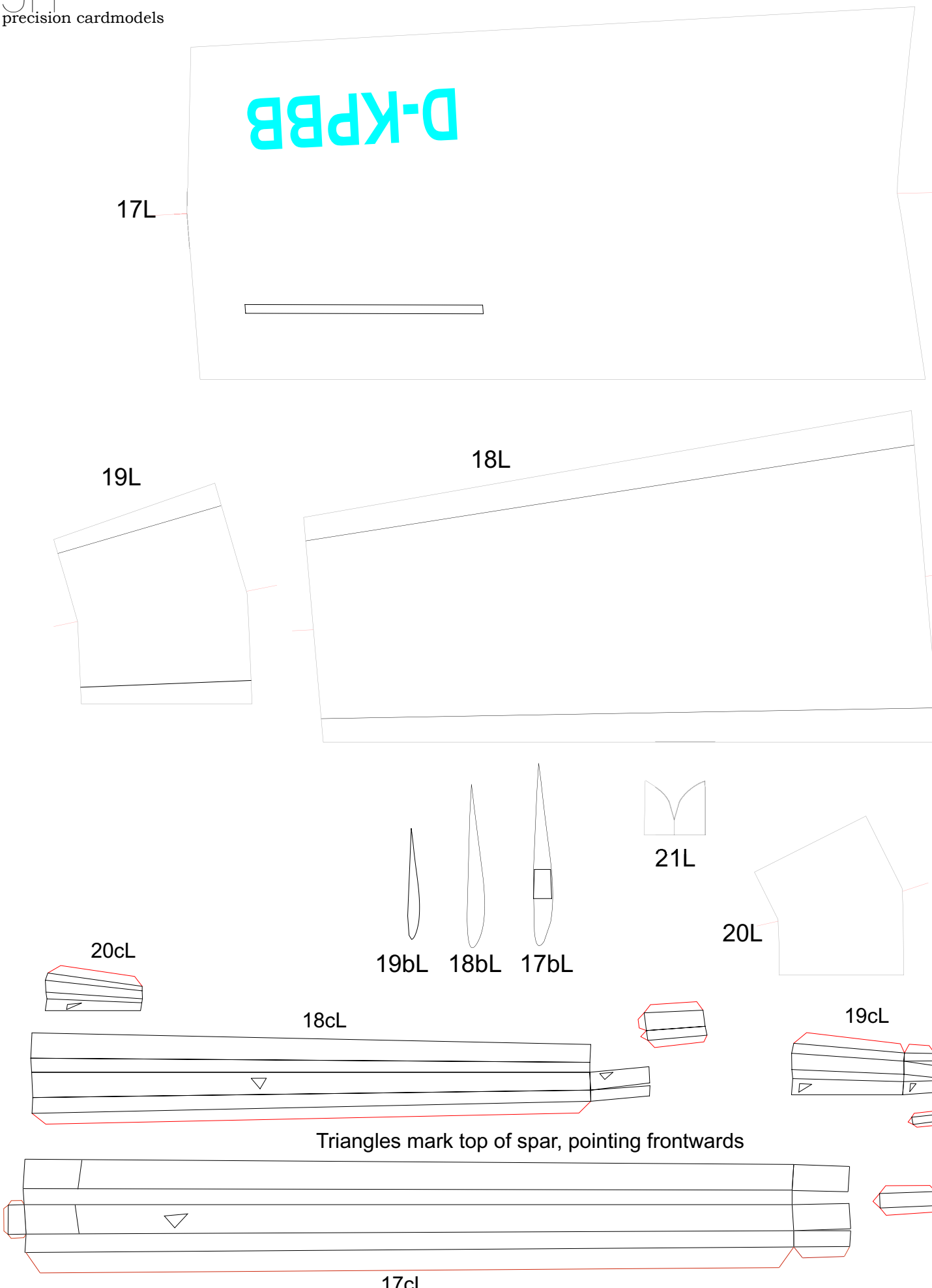
17bL

18cL

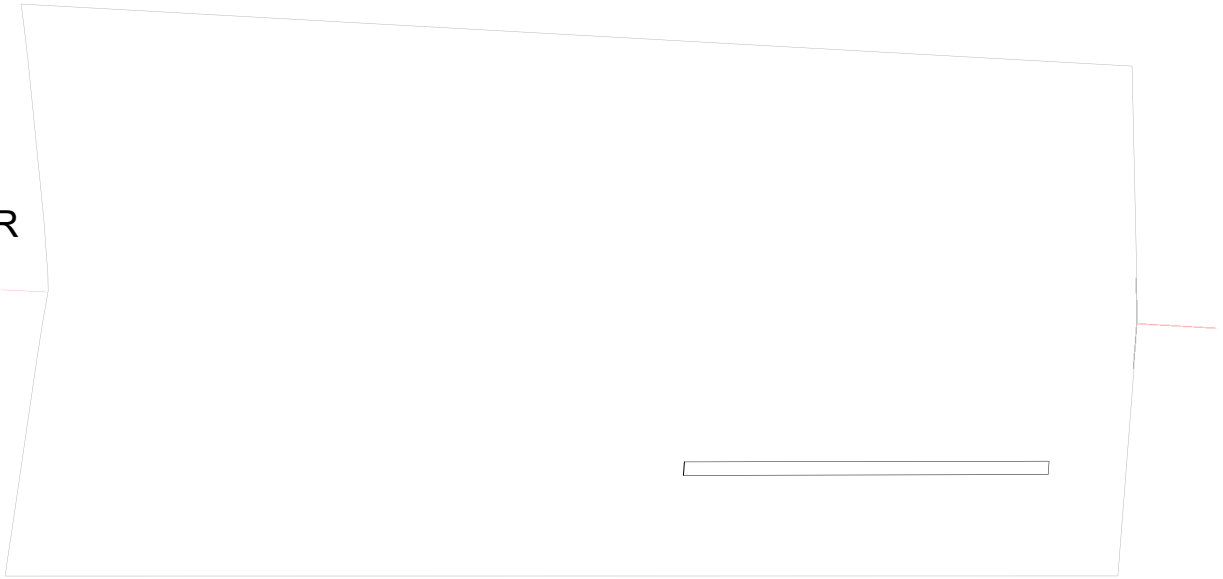
19cL

Triangles mark top of spar, pointing frontwards

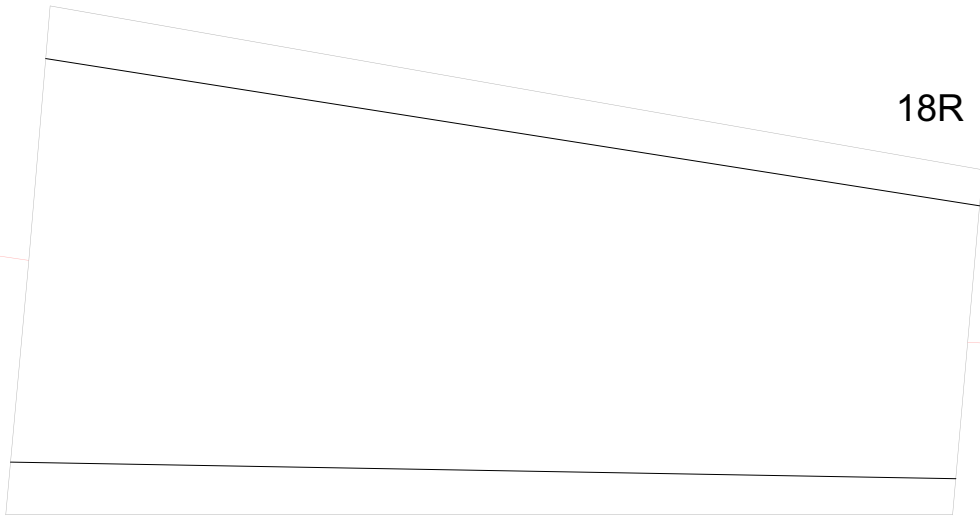
17cL



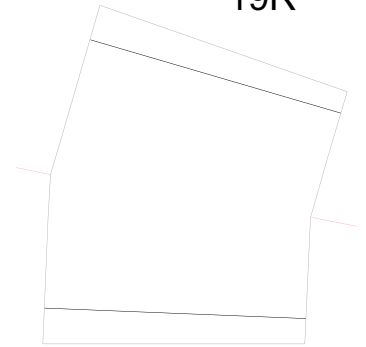
17R



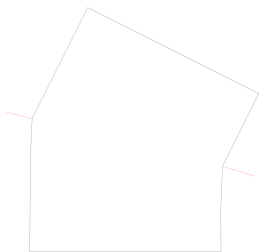
18R



19R



21R



20R



17bR

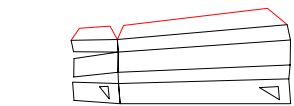
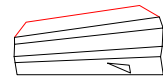


18bR

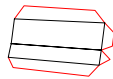


19bR

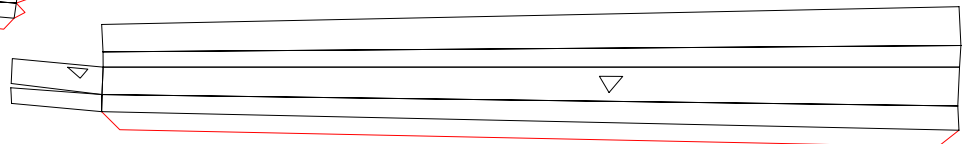
20cR



19cR



18cR



17cR

